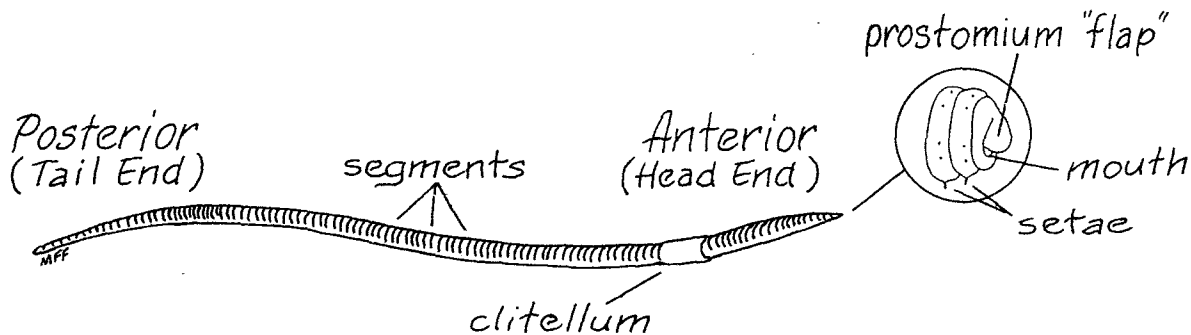


Wormformation

The shape of a worm is long and thin. It has a soft body and it has no bones beneath its skin. The body of a worm is made of many little rings with grooves between them. Each of these rings is called a segment. Each segment has bristles called setae that help the worm move. A worm has no arms, legs, or eyes.

**Directions**

Read the *Wormformation* and look at the earthworm diagram to answer the questions. (Hint: Use the glossary for extra help.)

1. What is the basic shape of a worm? _____
2. Does a worm have arms or legs? _____
3. Does a worm have a mouth? _____
4. The prostomium is a flap above the worm's _____
5. Does a worm have eyes? _____
6. What is the head end of a worm called? _____
7. What is the tail end of a worm called? _____
8. What is the name of the swollen band? _____
9. What are the rings on a worm's body called? _____
10. The bristles that aid in a worm's movement are called _____

Bonus Activity Look at a real worm. Identify its parts.